

BYS11-38-01D

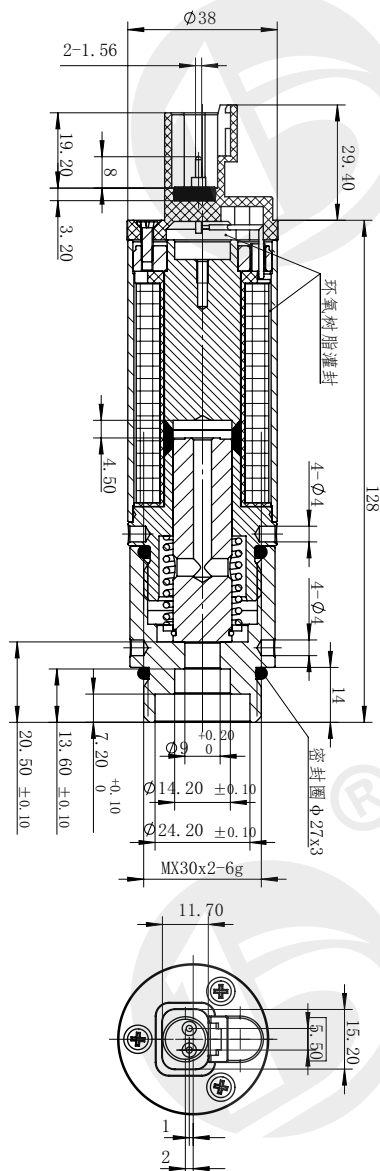
多路阀用电磁铁

Electromagnet for multi-way valve

- 适用于电磁多路阀
- 自带复位弹簧
- Suitable for electromagnetic multi-way valves
- Comes with return spring

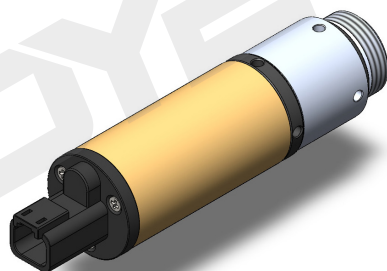
外形及连接尺寸

Outline and connection dimensions



DC 12V
DC 24V

其它规格可定做
Other can be customized

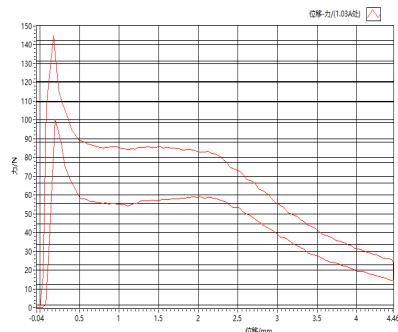


技术参数 /technical parameter

| | | |
|--------------------------------------|-----|-----------|
| 环境温度 Ambient temperature | °C | -25~50 |
| 电压波动范围 Voltage fluctuation range | % | 85 ~ 110 |
| 额定功率 Rated power | W | 56.3 |
| 额定行程 Rated stroke | mm | 4.5 |
| 全行程 Full stroke | mm | ≥ 4.5 |
| 工作油压 Working oil pressure | Mpa | ≤ 20 |
| 防护等级 Degree of protection | | IP54 |
| 操作频率 Operating frequency | T/h | 12000 |
| 通电持续率 Power on duration | % | 100 |
| 绝缘等级 Insulation class | | H(180) |
| 电气连接方式 Electrical connection mode | | AMP 9X0.5 |

力 - 位移特性曲线

F-S characteristic curve



样本数据来源于试验室环境，仅供参考，贵公司如需最新数据或有特殊需求，欢迎联系博业液压工程师。
The sample data comes from the laboratory environment and is only for reference. If your company needs the latest data or has special needs, please contact Boye hydraulic engineer.