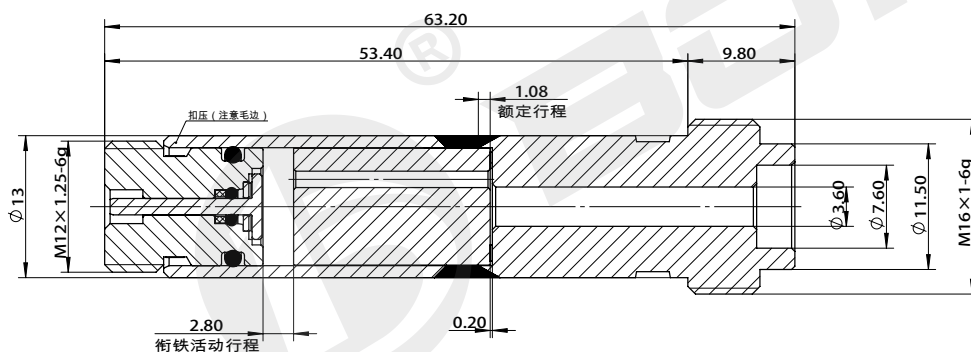
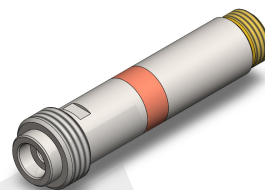


## 插装阀用导磁套

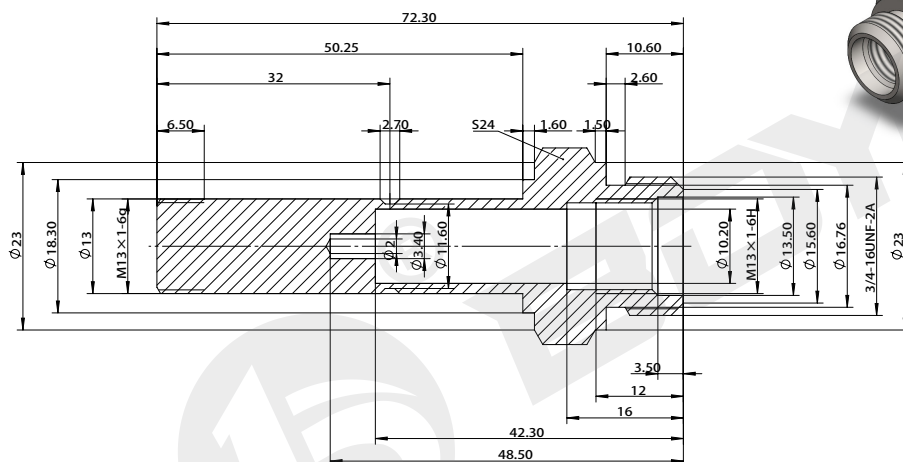
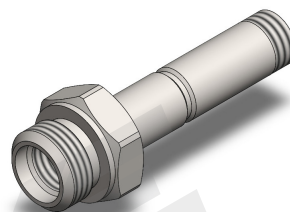
Magnetic guide tube for cartridge valve

# BYT31-13-01M



技术参数 /technical parameter					
工作油压 Working oil pressure	MPa	≤ 40	六角尺寸 Hexagon size	mm	— —

# BYT32-13-01



技术参数 /technical parameter					
工作油压 Working oil pressure	MPa	≤ 21	六角尺寸 Hexagon size	mm	S24

样本数据来源于试验室环境，仅供参考，贵公司如需最新数据或有特殊需求，欢迎联系博业液压工程师。  
The sample data comes from the laboratory environment and is only for reference. If your company needs the latest data or has special needs, please contact Boye hydraulic engineer.