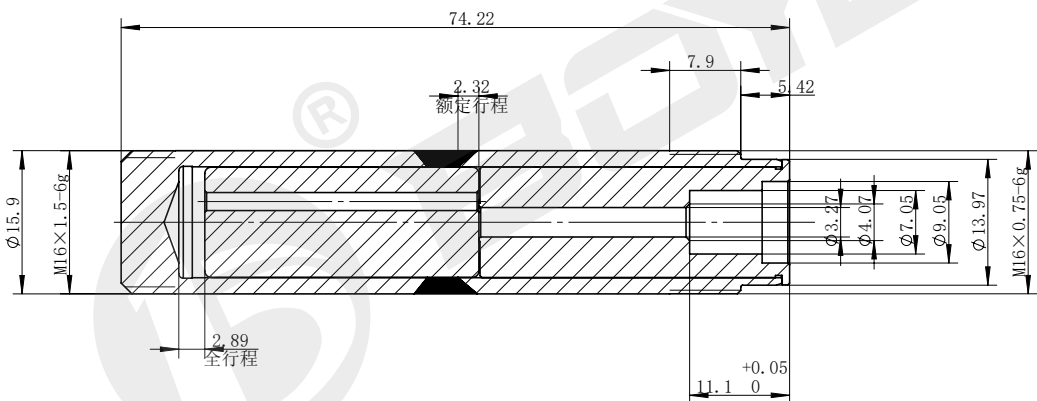
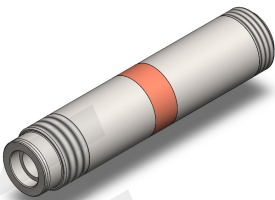


插装阀用导磁套

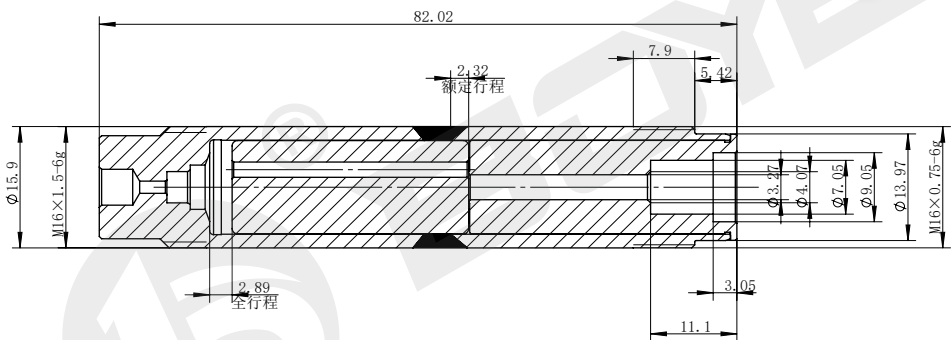
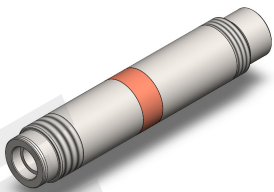
Magnetic guide tube for cartridge valve

BYT30-16-01



技术参数 /technical parameter					
工作油压 Working oil pressure	MPa	≤ 35	六角尺寸 Hexagon size	mm	—

BYT30-16-01M



技术参数 /technical parameter					
工作油压 Working oil pressure	MPa	≤ 35	六角尺寸 Hexagon size	mm	—

样本数据来源于试验室环境，仅供参考，贵公司如需最新数据或有特殊需求，欢迎联系博业液压工程师。
The sample data comes from the laboratory environment and is only for reference. If your company needs the latest data or has special needs, please contact Boye hydraulic engineer.